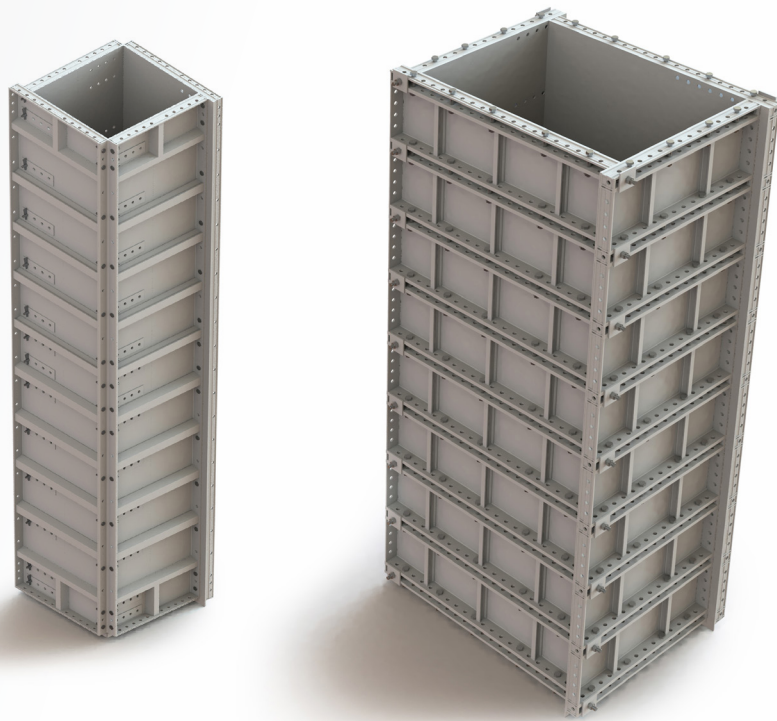


ADJUSTABLE ALUMINIUM COLUMN FORMWORK SYSTEM

铝合金可调柱模体系





COMPANY PROFILE

公司 介绍

GETO is mainly engaged in green construction and new energy.

Green prefabricated building products include modular building (including PC and steel structures); assembly precast concrete components, prefabricated steel structures; aluminium formwork, steel formwork, steel-framed timber formwork, climbing systems, fair-faced concrete formwork, infrastructure formwork and scaffolding products.

New energy focuses on investment, EPC construction, and operation of commercial and industrial "Photovoltaics, Storage, and Charging" projects, while providing the "Green Energy Future Living" one-stop residential energy solution.

In 2021, GETO was listed on the ChiNext board of the Shenzhen Stock Exchange in China (Stock Code: SZ 300986). We have established 12 production bases globally and registered the "GETO®" international trademarks in 32 countries and regions, with products and services reaching worldwide markets.

志特集团主营绿色新型装配式建筑，新能源。

绿色新型装配式建筑包括：模块化房屋（包括 PC、钢结构两大类）；装配式 PC，装配式钢结构；铝模，钢模，钢框木模，爬升式模架，清水混凝土模架，公基建类模架。

新能源包括：工商业“光、储、充”项目投资、EPC 建设、运维，“绿能未来居”一站式家庭能源解决方案。

志特新材”于 2021 年在 A 股创业板挂牌上市（股票代码：SZ 300986），目前已在全球设立 12 大生产基地，在 32 个国家和地区注册了“GETO®”国际商标，产品和服务遍及全球。

CONTENTS

P-04

ADJUSTABLE ALUMINIUM COLUMN FORMWORK
SYSTEM

铝合金可调柱模体系产品介绍

P-05

PRODUCT INTRODUCTION OF FULL-HEIGHT
ADJUSTABLE ALUMINIUM COLUMN FORMWORK

通高型可调柱模体系产品介绍

P-07

PRODUCT EXAMPLE SHOWCASE 实例展示

P-08

PRODUCT ADVANTAGES 产品优势

P-09

PRODUCT INTRODUCTION OF EXTENDED-HEIGHT
ADJUSTABLE ALUMINIUM COLUMN FORMWORK

加高型可调柱模体系产品介绍

P-11

INSTALLATION PROCESS 安装流程

P-12

LOCAL DETAILS 局部细节

P-13

PRODUCT ADVANTAGES 产品优势

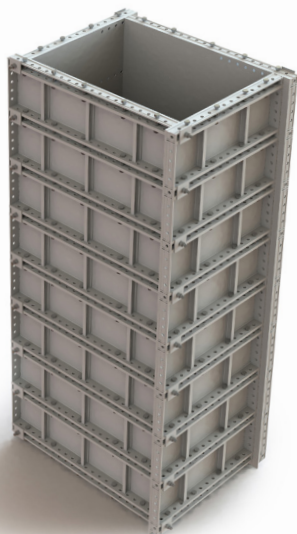
目录

ADJUSTABLE ALUMINIUM COLUMN FORMWORK SYSTEM

铝合金可调柱模体系产品介绍



3D Image of Full-Height Adjustable Aluminium Column Formwork
通高型铝合金可调柱模三维图



3D Image of Extended-Height Adjustable Aluminium Column Formwork
加高型铝合金可调柱模三维图

The adjustable aluminium column formwork system is constructed using the 63.5 system aluminium formwork (with a 63.5mm edge profile). Featuring pre-drilled holes on the back panel, it is assembled into a self-supporting rectangular column through specialized connection components. This system allows for flexible adaptation to various column cross-section dimensions without the need for additional hoop clamps or waler, significantly enhancing installation efficiency and reducing labor costs.

The adjustable aluminium column formwork system primarily consists of two types: the full-height adjustable aluminium column formwork and the extended-height adjustable aluminium column formwork. Both systems offer high standardization, reusability, rapid turnaround, excellent forming quality, and eco-friendly benefits. They can be selected based on specific project conditions to optimize construction efficiency.

The adjustable aluminium column formwork system is suitable for independent rectangular columns and structures with varying sections.

铝合金可调柱模板体系是采用 63.5 系统铝合金模板制成，通过模板背面开孔，配合连接构件，拼装成独立矩形柱，可满足不同截面尺寸柱子的施工需求，且无需额外增加抱箍背楞，大大提高了人工安装效率。

铝合金可调柱模板体系主要有两种：第一种为通高型铝合金可调柱模，第二种为加高型铝合金可调柱模。这两套体系都具有标准化程度高、可重复使用、可快速周转、成型质量优、绿色环保等综合优势，在不同的条件下可供选择使用。铝合金可调柱模板体系适用于：独立的矩形柱截面变化的结构均可适用。

PRODUCT INTRODUCTION OF FULL-HEIGHT ADJUSTABLE ALUMINIUM COLUMN FORMWORK 通高型可调柱模体系产品介绍

01

Aluminium panel components:

Composed of vertical wall panel with a width $\leq 600\text{mm}$ and a height of 3150mm, external corner component, and rocker. By incorporating a series of back drilling holes on the panel surface, the formwork size can be adjusted as needed. Pins and wedges are used for secure connections, ensuring reinforcement and stability.

铝合金面板构件:

由宽度 $\leq 600\text{mm}$ ，高度为 3150mm 的竖向墙模板、EC 阳角构件、R 角组成；通过在面板上开设连排背孔，达到调节模板尺寸大小的作用，通过销钉销片连接，达到加固的目的。

02

Connecting components:

Standard pins and wedges commonly used in aluminium formwork systems.

连接构件:

铝模常规使用的销钉销片。

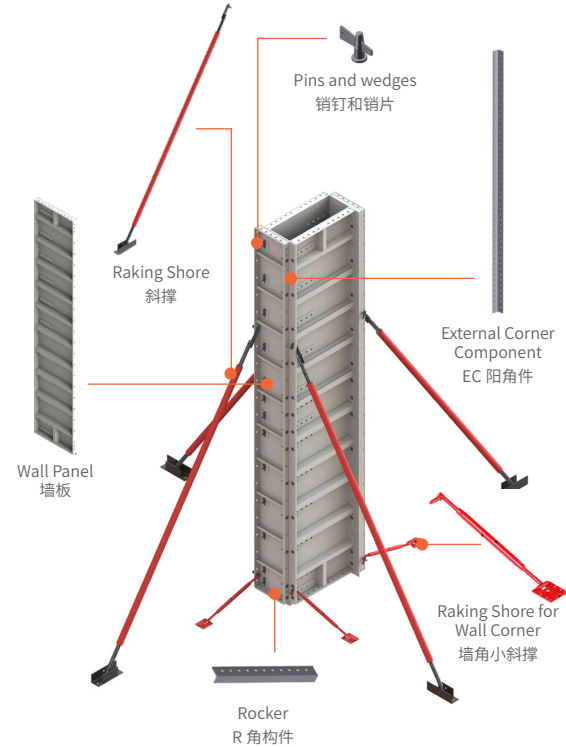
03

Raking shore component:

ranking shore base plate, long tie rod and raking shore for wall corner.

斜撑构件:

斜撑底座 + 长拉杆 + 墙角小斜撑组成。



PRODUCT INTRODUCTION OF FULL-HEIGHT ADJUSTABLE ALUMINIUM COLUMN FORMWORK 通高型可调柱模体系产品介绍

The full-height adjustable column formwork system is primarily suitable for the following cross-sectional dimensions of independent columns:

通高型可调柱模板体系主要适用于以下独立柱的截面尺寸：

Panel Width (mm) 模板宽度	Panel Code 模板代号	Panel Height (mm) 模板高度	Weight Per Panel(kg) 单块模板重量	Dimensions of Adjustable Column Cross-Section (mm) 可调节柱子截面尺寸	Remarks 备注
600	WR	3195	38.7	600/500/450/400/350	The panel height can be customized according to the column height, with a maximum limit of 3195mm. 模板高度可根据柱子高度定制，最高不超过3195mm
500			34.4	500/400/350/300	
450			32.2	450/350/300/250	
400			28.4	400/300/250	
350			25.7	350/250/200	
300			21.4	300/200	
250			19.2	250/150/100	

Applicable conditions: Suitable for independent columns or structural columns with a cross-sectional dimension of $\leq 600\text{mm}$.

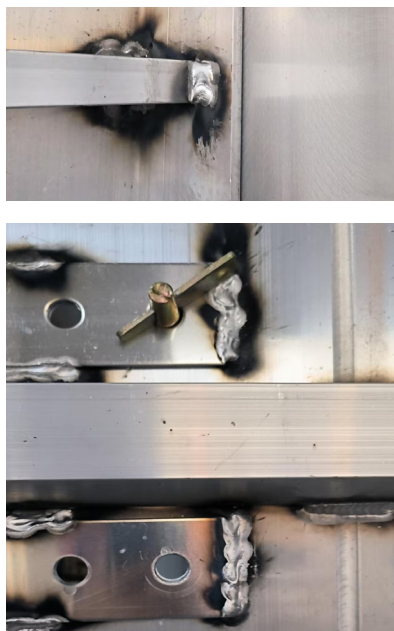
适用条件：适用于柱子截面尺寸 $\leq 600\text{mm}$ 的独立柱或者构造柱。

PRODUCT INTRODUCTION OF FULL-HEIGHT ADJUSTABLE ALUMINIUM COLUMN FORMWORK 通高型可调柱模体系产品介绍

PRODUCT EXAMPLE SHOWCASE 实例展示



Installation Example / 安装实例图



Connection Details / 连接细节图



Formwork Example / 模板实例图



Concrete Pouring / 浇筑图

PRODUCT INTRODUCTION OF FULL-HEIGHT ADJUSTABLE ALUMINIUM COLUMN FORMWORK 通高型可调柱模体系产品介绍

PRODUCT ADVANTAGES 产品优势

01

HIGH EFFICIENCY 高效率

For sections $\leq 600\text{mm}$, no bracing is needed; just pinning, significantly speeding up installation.

截面 $\leq 600\text{mm}$ 时，无需加固，仅需打销钉，显著提高安装速度。

02

BUDGET-FRIENDLY 低成本

Adjustable to fit different column cross-section sizes, saving formwork materials and reducing costs.

可调节适应不同柱子截面尺寸，节省模板材料，降低成本。

03

PREMIUM QUALITY 高品质

Full-height panels ensure fast installation, fewer seams, and excellent forming results.

整块通高模板，安装快捷，拼缝少，成型效果好。

04

EASY MOBILITY 易搬运

Lightweight panels for easy manual transport, reducing transportation costs.

模板重量轻，可人工搬运，降低运输成本。

PRODUCT INTRODUCTION OF EXTENDED-HEIGHT ADJUSTABLE ALUMINIUM COLUMN FORMWORK 加高型可调柱模板产品介绍

01

Aluminium panel components:

Consist of horizontal panel of 250 P 900 (250mm wide, 900mm high) and 50 P 900 (50mm wide, 900mm high), along with rocker. The components are connected using screws, with the bottom featuring Rocker. The 50 P 900 formwork is connected at the bottom, followed by the 250 P 900 formwork, and additional panels are stacked upwards to reach the desired height. The size of the formwork can be adjusted by incorporating a series of back holes on the 50 P 900 panels.

铝合金面板构件:

由 250 P 900 (250mm 宽, 900mm 高)、50 P 900 (50mm 宽, 900mm 高) 的横向模板及 R 角组成, 通过螺丝连接, 底部为 R 角, 后接 50 P 900 模板, 再接 250 P 900 模板, 依次往上接高, 达到模板最终的使用高度, 通过在 50 P 900 板上开设连排背孔, 达到调节模板大小的作用。

02

Connecting components:

Screw, nut, and large washer.

连接构件:

螺丝螺母、大垫片。

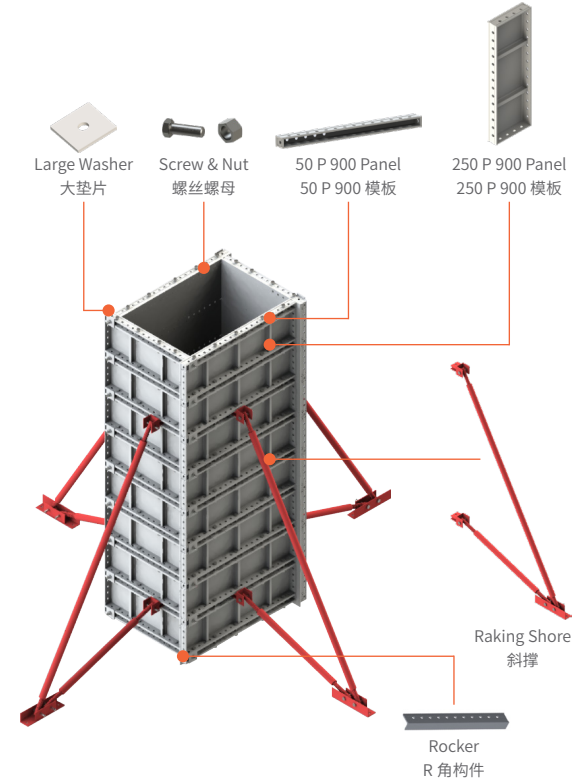
03

Raking shore component:

Raking shore base plate, long tie rod, short tie rod, and special connector.

斜撑构件:

斜撑底座 + 长拉杆 + 短拉杆 + 特制连接头组成。



PRODUCT INTRODUCTION OF EXTENDED-HEIGHT ADJUSTABLE ALUMINIUM COLUMN FORMWORK 加高型可调柱模板产品介绍

The extended-height adjustable column formwork system is primarily suitable for the following cross-sectional dimensions of independent columns:

加高型可调柱模板体系主要适用于以下独立柱的截面尺寸：

Panel Width (mm) 模板宽度	Panel Code 模板代号	Panel Height (mm) 模板高度	Weight Per Panel(kg) 单块模板重量	Dimensions of Adjustable Column Cross-Section (mm) 可调节柱子截面尺寸	Remarks 备注
250	P	900	5.365	800/750/700/650/600/550/ 500/450/400/350	The formwork height can be increased by stacking 50 P 900 + 250 P 900 panels in sequence. They are secured using screws and nuts. 模板高度方向上可通过 50 P 900+250 P 900 的板依次往上加高，采用螺丝螺母加固即可。
50			2.53		
45			1.55		

Applicable conditions: Suitable for independent columns or structural columns with a cross-sectional dimension of $\leq 800\text{mm}$.

适用条件： 适用于柱子截面尺寸 $\leq 800\text{mm}$ 的独立柱或者构造柱。

PRODUCT INTRODUCTION OF EXTENDED-HEIGHT ADJUSTABLE ALUMINIUM COLUMN FORMWORK 加高型可调柱模板产品介绍

INSTALLATION PROCESS 安装流程



01

Install the Rocker and
50 P 900 panel

安装 R 角及 50 P 900
模板

02

Connect the 250 P 900
panel upward

向上拼接 250 P 900 模
板

03

Connect the 50 P 900
and 250 P 900 panels
sequentially upward

依次往上继续拼接 50 P
900 模板和 250 P 900
模板

04

Assemble into a full-
width large panel

拼成整面宽大模板

05

Secure the four large panels by fastening screws
and nuts through the back holes of the 50 P
900 panel, forming a rectangular independent
column

将四块大模板用螺丝螺母穿过 50 P 900 模板背孔进
行加固，组成矩形独立柱



PRODUCT INTRODUCTION OF EXTENDED-HEIGHT
ADJUSTABLE ALUMINIUM COLUMN FORMWORK
加高型可调柱模板产品介绍

LOCAL DETAILS
局部细节

PRODUCT INTRODUCTION OF EXTENDED-HEIGHT ADJUSTABLE ALUMINIUM COLUMN FORMWORK 加高型可调柱模板产品介绍

PRODUCT ADVANTAGES 产品优势

01

HIGH EFFICIENCY 高效率

No bracing or tie plates required for cross-sections $\leq 800\text{mm}$, easy installation, and faster construction.

截面 $\leq 800\text{mm}$ 时，无需背楞或拉片加固，安装便捷，施工加速。

02

BUDGET-FRIENDLY 低成本

Adjustable to various column cross-section sizes, reducing formwork usage and lowering material and construction costs.

适用于多种柱截面尺寸调节，减少模板使用，降低材料和施工投入。

03

FLEXIBLE SIZING 强适应

Standard modular design allows height adjustment, adapting to different column needs.

由标准模板组合，可拆装调节高度，匹配不同柱子施工需求。

04

VERSATILE APPLICATION 广适用

Suitable for larger rectangular columns, ideal for a wide range of projects.

组合拼装后，可满足更大矩形柱施工，适用于多种工程场景。

PROMOTE GREEN LOW-CARBON DEVELOPMENT AND IMPROVE THE RESIDENTIAL LIFE QUALITY.

CONTACT

Sales Hotline: 0086-760-88589004

E-mail: geto_market@geto.com.cn

Website: www.getoformwork.com

HEADQUARTERS

Greater Bay Area—No. 13 Heqing Road, Tsuihang New District, Zhongshan City, Guangdong Province

20250403V1

